



Standup Series Water Cooler

RECEIVING, CLEANING & OPERATING INSTRUCTIONS

Glacier



Mogul



Alpine



THANK YOU FOR BUYING A CRYSTAL MOUNTAIN WATER COOLER!

RECEIVING

Inspect the cooler box for any evidence of shipping or handling damage. In case of shipping damage, claims should be filed promptly with the carrier. Ensure cooler stands upright for 24 hours before plugging it in.

OPERATION

1. Place the water cooler at a minimum of 2 inches/5cm away from the wall to ensure ventilation.

2. Place the water bottle on top of the cooler appropriately.

Note: On Hot & Cold models, vent the hot tank by holding the hot faucet open until water flows out.

3. Ensure that the available power supply matches the cooler's voltage specifications indicated on the nameplate label (located at the rear). Plug power supply cord into receptacle. Please ensure that cooler is set up so as access to the power outlet and plug is unobstructed. Turn on heater switch.

Note: To provide additional protection from the risk of shock, this unit **MUST** be connected to a ground fault circuit interrupter (GFCI) outlet at all times. Use of an extension cord will void any warranties.

4. Do not draw water from the cooler for about 30 minutes to let the water cool or heat. Optimum water temperatures will be reached after several hours of operation.

5. Ensure the following when cooler is to be serviced:

5.1 Turn off Hot Tank Switch (Hot & Cold models only) and disconnect power supply cord.

5.2 Remove bottle from reservoir.

5.3 Use a bucket to drain water from the cold water reservoir through faucets. On **Hot & Cold** models, turn off hot tank switch as above. Allow 1 hour for the hot water to cool down inside the hot water tank. Remove the drain plug at the rear of the cooler to drain into a container.

**CAUTION! ALWAYS DRAIN WATER COMPLETELY
BEFORE SHIPPING OR STORING THE COOLER!**

REMOVABLE RESERVOIR

E & S Series

On Cook & Cold and Hot & Cold models the reservoir can be removed easily by following the steps given below.

1. Unplug and approach the cooler from the front.
2. Remove the water bottle and drain water from the reservoir and hot tank, remembering to cool and drain hot tank. Allow 1 hour for hot water to cool down inside the hot tank before removing the drain plug at the rear of the cooler to drain into a bucket.
3. Remove the locking pin from the Crystal Guard, which may be stiff, requiring a tool. Use the fingertips of both hands to press on the Guard and turn counter clockwise till it is free from the cooler opening. (Figure 1)

Note: If the cooler is equipped with a DryGuard™, see the DryGuard™ removal section of the instructions.

4. Use fingers of both hands to lift up and remove the insulation jacket covering the reservoir, from the cooler opening.
5. Remove the baffle cup by lifting straight out. Loosen & remove the baffle stem and wing nut by turning counterclockwise.
6. Approach the cooler from the rear and open the latch provided on the evaporator band.
7. Use both hands to loosen the reservoir from the evaporator band and lift it straight through the cooler opening.

R, P, & G Series

On Cook & Cold and Hot & Cold models the reservoir can be removed easily by following the steps given below.

1. Unplug and approach the cooler from the front.
2. Remove the water bottle and drain water from the reservoir and hot tank, remembering to cool and drain hot tank. Allow 1 hour for hot water to cool down inside the hot tank before removing the drain plug at the rear of the cooler to drain into a bucket.
3. Remove the Crystal Guard by placing fingertips of both hands and turning it counter clockwise till it is free from the cooler opening. (Figure 1)
Note: If the cooler is equipped with the DryGuard™, see the DryGuard™ removal section of the instructions.
4. Using fingers of both hands loosen and remove the insulation jacket covering the plastic reservoir from the cooler opening. Note: On Hot & Cold models, after step 4 unscrew the round plastic one piece baffle.
5. Approach the cooler from the rear and open the latch provided on the evaporator band.
6. Remove the faucets from the reservoir elbows by turning them counter clockwise.
7. Using both hands, loosen the reservoir from the evaporator band and lift it straight through the cooler opening.

DryGuard™

Installation (See Figure 2)

1. Place the Inner DryGuard™ Cone assembly onto the center of the cold water reservoir; make sure the words "LIFT THIS SIDE TO REMOVE" is aligned with the sides of the cooler and that the filter cap is pointed towards the rear of the cooler.
2. Using the palms of both hands, push the DryGuard™ straight down into the reservoir.
3. Install the Outer DryGuard™ Cover onto the cooler in the proper positions on the body and lock into place by turning clockwise until it fits tightly.

Removal (See Figure 2)

1. Remove the bottle from the cooler.
2. Loosen and remove the Outer DryGuard™ Cover from cooler's body by pressing the fingertips of both hands onto lid and turning it counter clockwise until it is free from the cooler opening.
3. Approaching the cooler from left (or right), place one palm onto the top of the cooler on the side furthest from you, and using your thumb, press downwards on the reservoir insulation. Using your other hand, grip the edge of the Inner DryGuard™ Cone and pull it up slowly to remove.

CLEANING

Do not immerse the unit in water for cleaning

External: With the electrical power off, use only mild dishwashing liquid or cleaning products and a soft cloth for cleaning the exterior surfaces. DO NOT USE bleach or abrasive cleaners. Use a vacuum cleaner to remove dirt and lint from the condenser. The unit should be cleaned every 3 months, except where fingers touch the temperature selectors, which can be wiped often with hygienic wipes or mild food grade disinfecting or cleaning products.

Caution: Do not clean unit with a water jet device.

Internal: In the interest of hygiene it is recommended that the water cooler is cleaned every 6 months. Please contact your distributor for further information

Caution: This operation should be carried out by properly trained personnel. Only use FDA food grade approved sanitizing products. The use of these products must be in accordance with the manufacturer's safety instructions and recommendations.

WARNING

— This appliance can be used by children aged from 8 years and above and persons with reduced physical, sensory or mental capabilities or lack of experience and knowledge if they have been given supervision or instruction concerning use of the appliance in a safe way and understand the hazards involved. Children shall not play with the appliance. Cleaning and user maintenance shall not be made by children without supervision.

— If the supply cord is damaged, it must be replaced by the manufacturer, its service agent or similarly qualified persons in order to avoid a hazard.

— **WARNING:** Keep ventilation openings, in the appliance enclosure or in the built-in structure, clear of obstruction.

— **WARNING:** Do not use mechanical devices or other means to accelerate the defrosting process, other than those recommended by the manufacturer.

— **WARNING:** Do not damage the refrigerant circuit.

— **WARNING:** Do not use electrical appliances inside the food storage compartments of the appliance, unless they are of the type recommended by the manufacturer.

— Do not store explosive substances such as aerosol cans with a flammable propellant in this appliance.

— This appliance is intended to be used in household and similar applications such as

- staff kitchen areas in shops, offices and other working environments;
- farm houses and by clients in hotels, motels and other residential type environments;
- bed and breakfast type environments;
- catering and similar non-retail applications.

— **WARNING:** To avoid a hazard due to instability of the appliance, it must be fixed in accordance with the instructions.

— **WARNING:** The Red Faucet dispenses hot water during normal operation that may cause severe burns.



This marking indicates that this product should not be disposed with other household wastes. To prevent possible harm to the environment or human health from uncontrolled waste disposal, recycle it responsibly to promote the sustainable reuse of material resources. And the disposal should only be done through public collection points.

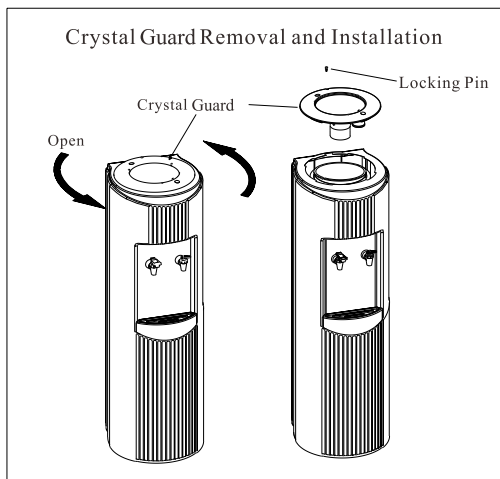
This product is manufactured with R600a - a refrigerant gas with low Global Warming Potential (GWP) and Ozone Depletion Potential (ODP).

The customer acknowledges that water, like other liquids, can cause damage to surfaces. The customer takes full responsibility for placing the cooler within a residence or business, and acknowledges that failure to address drips, leaks or spillages is at the customer's risk.

Environmental application temperature: 10~32°C.

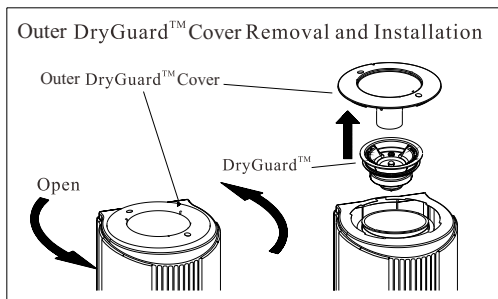
This unit is rated IP10 (This unit is not protected against ingress of water)

Install indoors on a flat level surface only.



<Figure 1>

Note: The product you have purchased may look different than the model shown in Figure 1.



<Figure 2>



Crystal Mountain Products Limited

North American Sales Office

200 Carnegie Drive, Suite 234

St. Albert, AB, T8N 5A7 Canada

Toll Free: 800 878 6422

Tel: 1 780 454 4545

E-Mail: sales@crystalcoolers.com

European Sales Office

Fence House, Fence Avenue

Macclesfield, Cheshire

United Kingdom SK10 1LT

Tel: +44(0) 1625 439 111

Fax: +44 (0) 1625 502 527

E-mail: cmeurope@crystalcoolers.com

Crystal Mountain International Limited

Hong Kong Sales Office

Room 610

Winfield Commercial Building 6-8A

Prat Avenue, Tsimshatsui

Kowloon, Hong Kong

Tel: (852)2368 1989

Fax: (852)30176727

E-mail: cmasia@crystalcoolers.com

Website: www.crystalcoolers.com

CE  **UL**  **CB**  **CCC** **SASO ISO9001 WEEE RoHS**

Crystal Mountain has a policy of continuous development and reserves the right to change specifications without notification.

DOC-C100184 REV1120