



Shock Arrestor Inspection/Replacement (**Blizzard** POU Water Cooler)

MAINTENANCE

Please note that only properly trained personnel may perform service and maintenance.

- Ensure that the system is disconnected from the mains power supply, cooled and system drained of water prior to performing maintenance or repairs.
- Check the Shock Arrestor Pre-Charge annually (minimum) to verify that the internal pressure is within 20% of the values indicated on the label (50 psi / 3.45 Bar if not otherwise stated).
- In order to maintain the external surface of the expansion tank, periodical cleaning shall be performed, only using water and soap.
- The Shock Arrestor is subjected to changes in system pressures, and may deteriorate over time; in the event that the Shock Arrestor no longer works, it should be replaced.

Note: To ensure the proper functioning of the system, the Shock Arrestor must be replaced in the event of excessive deterioration or every 5 years from installation date.

- Use only Crystal Mountain original replacement parts.

CRYSTAL MOUNTAIN shall not be responsible for any damage to things, property and / or injuries to persons due to not observing all the above instructions and, particularly, operation and maintenance of the tank itself and / or the connected system.

YEARLY MAINTENANCE

Ensure that the system power is off and disconnected, and system not pressurized (Valve Open).

1. Disconnect power supply cord (Figure 1), turn off water supply valve (Figure 2) and push the faucet button to release the water pressure (Figure 3).



Figure 1

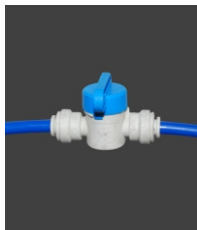


Figure 2



Figure 3

2. Disconnect water inlet tube (Figure 4) and remove the front panel screws (Figure 5).



Figure 4



Figure 5

3. Remove the front panel (Figure 6).



Figure 6

4. Remove cap from Shock Arrestor (Figure 7).



Figure 7

5. Connect pressure meter to charge valve (Figure 8).



Figure 8

6. Check the Shock Arrestor Pre-Charge to verify that the internal pressure is within 20% of the values indicated on the label (50 psi / 3.45 Bar if not otherwise stated) (Figure 9), remove charge valve and replace cap (Figure 10).

Note: In the event that the Shock Arrestor will not hold pressure, a replacement will be required (see replacement instructions).

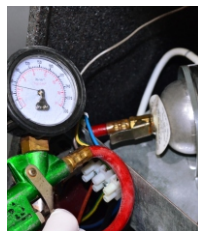


Figure 9



Figure 10

REPLACEMENT OF SHOCK ARRESTOR

1. Disconnect power supply cord (Figure 11), turn off water supply valve (Figure 12) and push the faucet button to release the water pressure (Figure 13).



Figure 11



Figure 12



Figure 13

2. Disconnect water inlet tube (Figure 14) and remove the front panel screws (Figure 15).



Figure 14



Figure 15

3. Remove the front panel (Figure 16), remove the bracket screws holding the Shock Arrestor (Figure 17). Use a wrench to hold the copper nut, and a second to disassemble the Shock Arrestor (Figure 18), and install the replacement component (Figure 19) .



Figure 16

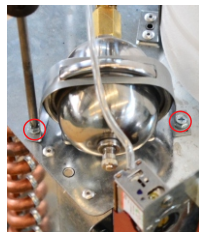


Figure 17



Figure 18

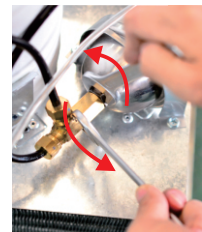


Figure 19

4. Reinstall Shock Arrestor bracket (Figure 20), and assemble front panel and mounting screws (Figure 21).

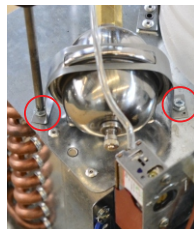


Figure 20



Figure 21

5. Connect water inlet tube and turn on water supply valve.