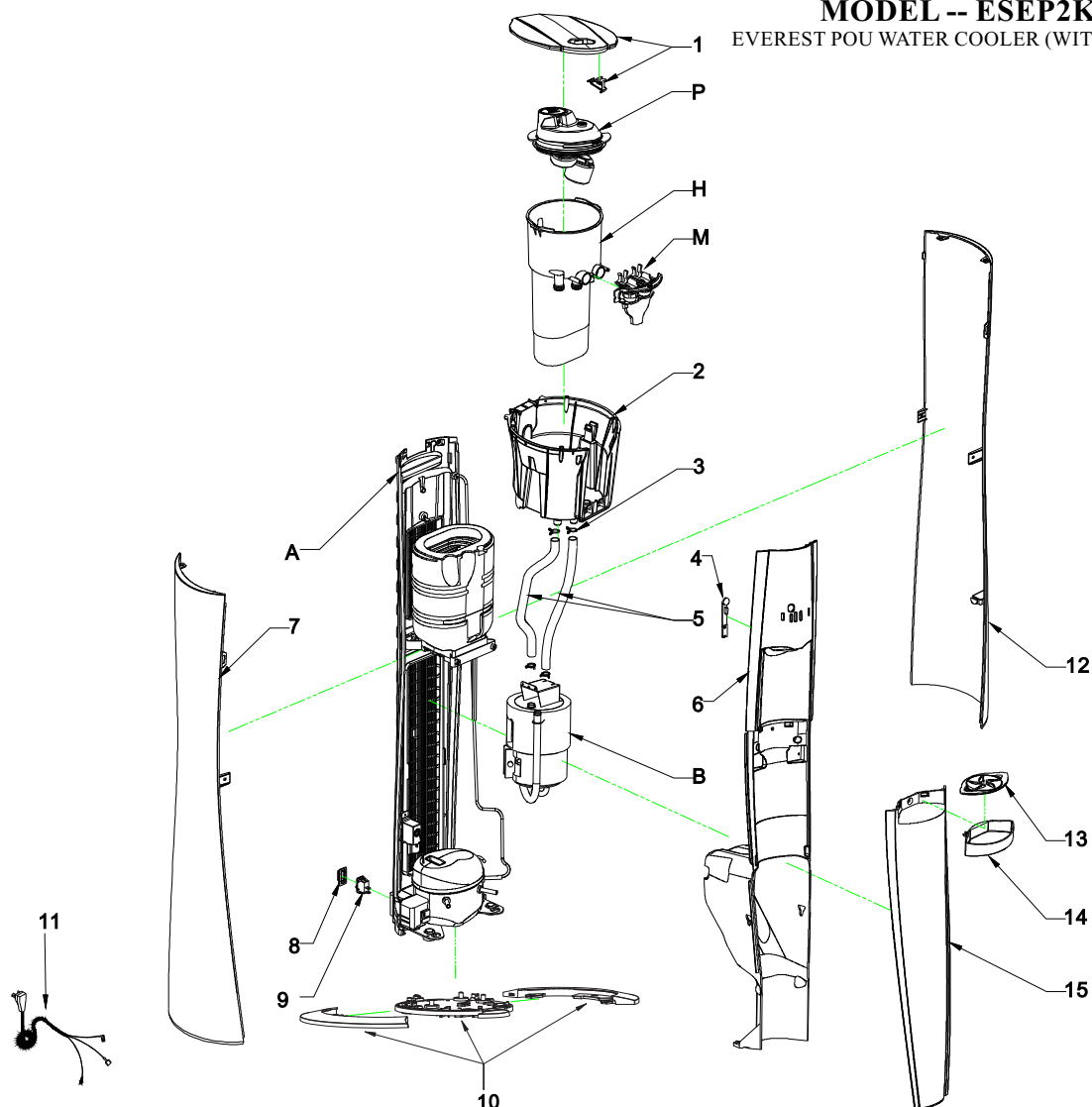


MODEL -- ESEP2KHL2NC

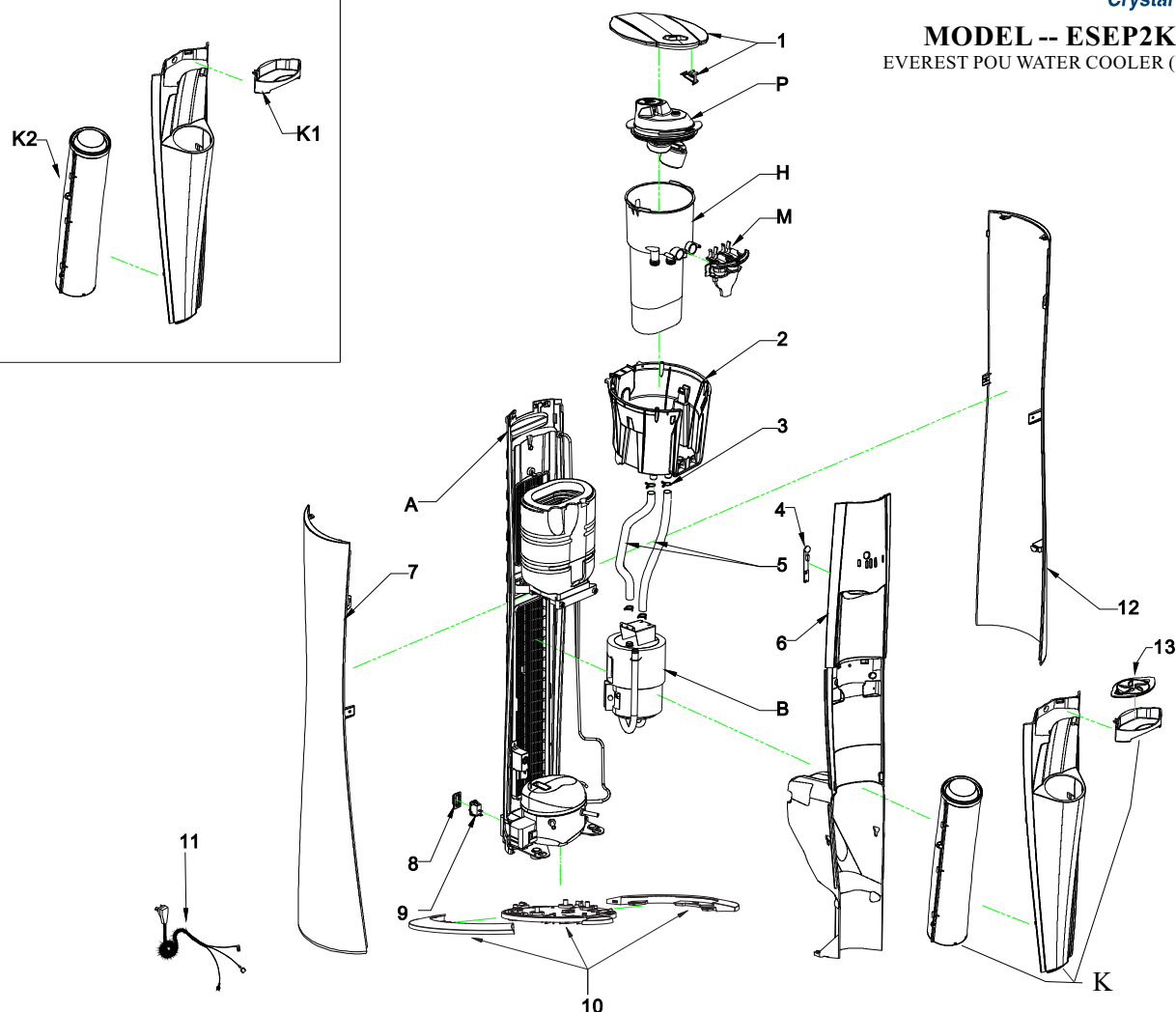
EVEREST POU WATER COOLER (WITHOUT CUP)



220V Everest POU Water Cooler Parts Listing (Main Parts For Without Cup Dispenser)

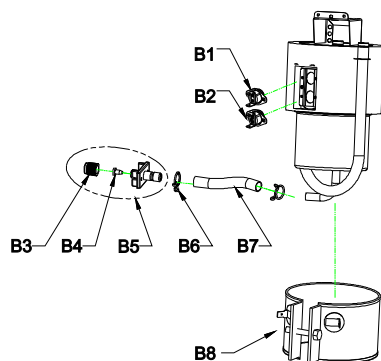
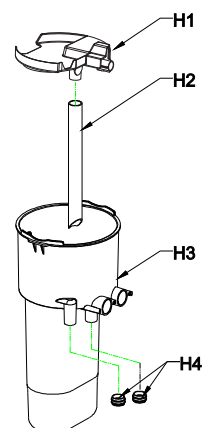
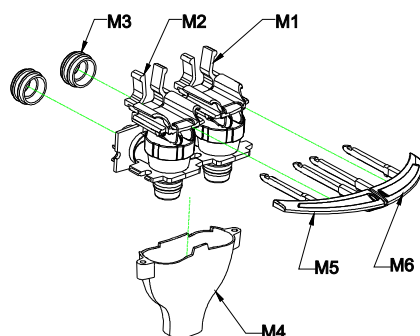
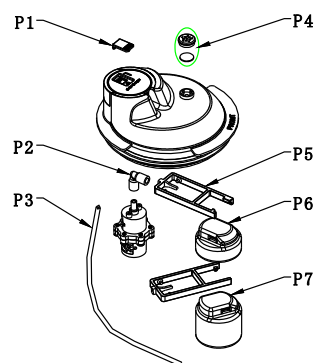
NO.	DESCRIPTION	PART CODE
1	TOP COVER ASSEMBLY- POU EVEREST	SUB-C200250
2	UPPER RESERVOIR SUPPORT	PLC-C140019
3	SPRING CLIP - 15MM	FAS-C100100
4	HOT SAFETY CLIP	PLC-C140005
5	SILICON TUBE - 13MM ID X 360MM	SIL-C140003
6	MAIN FRONT PANEL ASSEMBLY, GREY - BOXED	SUB-C200208
7	SIDE PANEL, LEFT, BLACK - BOXED	SUB-C200207
8	PROTECTIVE SWITCH COVER	SIL-C100069
9	HOT TANK POWER SWITCH	ELE-C000010
10	BASE PLATE ASSEMBLY	SUB-C200340
	10A BASE PLATE, LEFT	PLC-C141001
	10B BASE PLATE, MIDDLE	PLC-C141003
	10C BASE PLATE, RIGHT	PLC-C141002
11	H&C POWER CORD, (UK) 220V-EVEREST	ELE-C100186
	H&C POWER CORD, (EURO) 220V-EVEREST	ELE-C100187
12	SIDE PANEL, RIGHT, BLACK - BOXED	SUB-C200209
13	DRIP TRAY GRILL, CHROME	PLC-C140029
14	DRIP TRAY (NO CUP), CHROME	PLC-C140030
15	LOWER FRONT (NO CUP), GREY - BOXED	SUB-C200211
16	BACK PANEL, BLACK - BOXED	SUB-C200212

K Cup Dispenser



220V Everest POU Water Cooler Parts Listing (Main Parts For With Cup Dispenser)

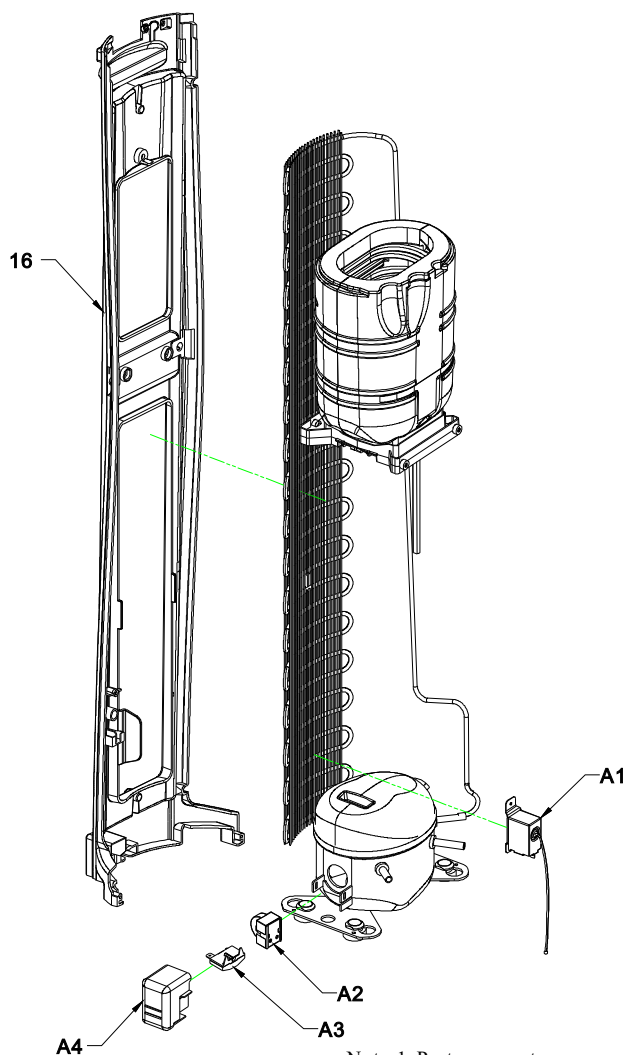
NO.	DESCRIPTION	PART CODE
1	TOP COVER ASSEMBLY- POU EVEREST	SUB-C200250
2	UPPER RESERVOIR SUPPORT	PLC-C140019
3	SPRING CLIP - 15MM	FAS-C100100
4	HOT SAFETY CLIP	PLC-C140005
5	SILICON TUBE - 13MM ID X 360MM	SIL-C140003
6	MAIN FRONT PANEL ASSEMBLY, GREY - BOXED	SUB-C200208
7	SIDE PANEL, LEFT, BLACK - BOXED	SUB-C200207
8	PROTECTIVE SWITCH COVER	SIL-C100069
9	HOT TANK POWER SWITCH	ELE-C000010
10	BASE PLATE ASSEMBLY	SUB-C200340
	10A BASE PLATE, LEFT	PLC-C141001
	10B BASE PLATE, MIDDLE	PLC-C141003
	10C BASE PLATE, RIGHT	PLC-C141002
11	H&C POWER CORD, (UK) 220V-EVEREST	ELE-C100186
	H&C POWER CORD, (EURO) 220V-EVEREST	ELE-C100187
12	SIDE PANEL, RIGHT, BLACK - BOXED	SUB-C200209
13	DRIP TRAY GRILL, CHROME	PLC-C140029
K	LOWER FRONT PANEL + CUP DISP ASSM, GREY	SUB-C200215
	K1 DRIP TRAY (W/CUP), CHROME	PLC-C140031
	K2 EVEREST CUP DISPENSER (ONLY) - BOXED	SUB-C200216

B Hot Tank Assembly

H Reservoir Assembly

M Faucet Assembly

P POU Kit Assembly


Note: 1. Parts may not appear exactly as shown.
2. Parts shown may not be present on all models.

220V Everest POU Water Cooler Parts Listing (SUB Series Assembly)

NO.	DESCRIPTION		PART CODE	NO.	DESCRIPTION		PART CODE
B	220V HOT TANK + ELECTRICAL ASSEMBLY		SUB-C200193	M	FAUCET ASSEMBLY		
	B1	83C CERAMIC AUTO CUTOUT	ELE-C100109		M1	COLD FAUCET ASSM	SUB-C200204
	B2	95C CERAMIC MANUAL RESET	ELE-C100142		M2	HOT FAUCET ASSM	SUB-C200205
	B3	HT DRAIN CAP	PLC-C100004		M3	SEAL, INLET/OUTLET	SIL-C120006
	B4	RED SILICONE DRAIN PLUG	SIL-C100055		M4	FAUCET OUTLET	PLC-C140011
	B5	EVEREST HOT TANK DRAIN ASSM	SUB-C200210		M5	HOT FAUCET HANDLE	SUB-C200269
	B6	SPRING CLIP - 12MM	FAS-C000029		M6	COLD FAUCET HANDLE	SMT-C140010
	B7	SILICONE DRAIN TUBE ID8 X OD11 X 80MM	SIL-C140004				
	B8	220V EVEREST HEATER, 450 WATT	ELE-C100189	P	EVEREST POU CONVERSION KIT - BOXED		SUB-C200243
			P1		INDICATOR ASSM-CLEAR WINDOW	SIL-C100010	
			P2		1/4" POU PLASTIC ELBOWS	MIS-C000044	
H	RESERVOIR ASSEMBLY				P3	1/4" O.D. TUBING	SIL-C000017
	H1	BAFFLE	PLC-C140070		P4	DRYGUARD FILTER/CAP ASSM	SUB-C000199
	H2	SIPHON TUBE	PLC-C140028		P5	FLOAT ARM, EV POU	PLC-C140035
	H3	RESERVOIR	PLC-C140009		P6	EV POU FLOAT - SMALL	PLC-C140042
H4	SEAL, INLET/OUTLET	SIL-C120006	P7		EV POU FLOAT - BIG	PLC-C140041	



Note: 1. Parts may not appear exactly as shown.
2. Parts shown may not be present on all models.

220V Everest POU Water Cooler Parts Listing (A Refrigeration System)

NO.	DESCRIPTION	PART CODE
A	220V REFRIGERATION SYSTEM REPLACEMENT PARTS	
	16 BACK PANEL, BLACK - BOXED	SUB-C200212
	A1 WP2A, COLD THERMOSTAT	REF-C100193
	A2 220V COMPRESSOR RELAY (B30H)	REF-C100162
	A3 220V COMPRESSOR OVERLOAD PROTECTOR (B30H)	REF-C100163
	A4 220V COMPRESSOR COVER (B30H)	REF-C100164

Jan 26, 2014